

# Our Life-Changing Research

A St Vincent's-wide research  
community that drives excellence  
in care and champions our  
Mission and Values



ST VINCENT'S  
HEALTH AUSTRALIA

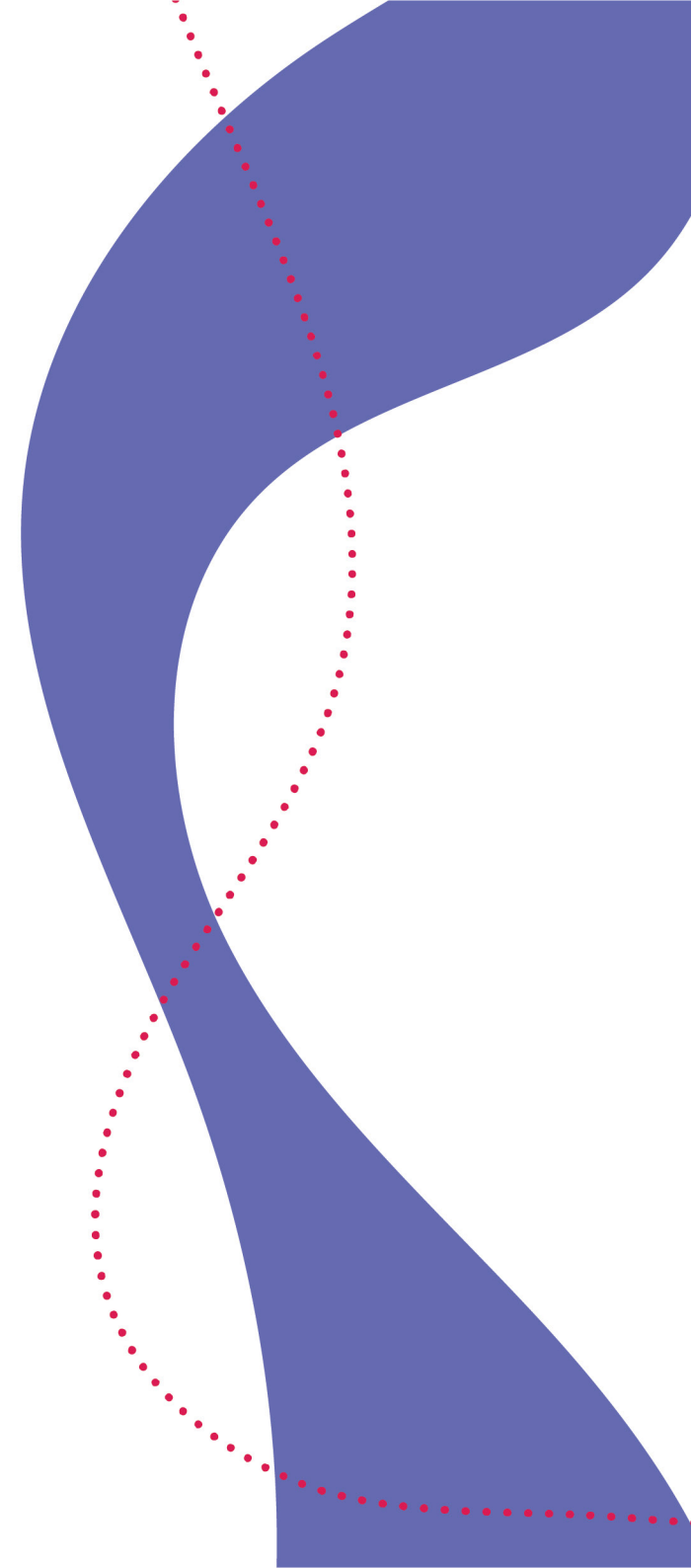
go beyond nd

# Why an organisation-wide Research Strategy?

Research has long been a strength for St Vincent's, with our major precincts going beyond to drive innovation and healthcare transformation through high quality programs and partnerships.

Understanding the vital link between research and clinical excellence, the Board and Senior Executives are pleased to support this important new initiative that positions research as a core component of St Vincent's business across all divisions and facilities.

***Our Life-Changing Research* is an organisation-wide 5 year strategy that demonstrates St Vincent's strong commitment to health and medical research, framing St Vincent's as a research-rich organisation and promoting our goal to be a globally recognised leader in generating and implementing evidence into clinical practice.**



# Building on our Strengths to realise fresh Opportunities

Consultation with researchers, clinicians and leaders throughout the organisation has highlighted our research strengths while also identifying numerous opportunities for broader engagement, greater collaboration, and ultimately greater research output and impact.

## WE HAVE A UNIQUE FOCUS ON SUPPORTING PEOPLE WHO ARE:

- ABORIGINAL OR TORRES STRAIT ISLANDER
- EXPERIENCING HOMELESSNESS
- INCARCERATED
- FACING MENTAL ILLNESS
- AFFECTED BY DRUG AND ALCOHOL ADDICTION

Central to the strategy is therefore the establishment of *St Vincent's research community*, providing opportunities to:

- / Fully understand, recognise and communicate the research being undertaken within our organisation
- / Fully utilise our combined resources to enable and facilitate research and translation
- / Broaden research activities into private and care services divisions to improve healthcare research and excellence across all areas of care
- / Broaden research engagement and involvement to all clinical areas spanning nursing, allied health, medicine and health services
- / Minimise duplication and strengthen research support and processes across the organisation
- / Use our position to advocate for health and medical research nationally
- / Use the strength of St Vincent's organisation to attract clinical trials to our sites
- / Use our guiding compass, our Mission, to facilitate research in areas of social need

# Our Life-Changing Research

A St Vincent's-wide research community that drives excellence in care and champions our Mission and Values

## Better Care

Our community experiencing better care and value through research driven improvement and access to new therapies and medical devices

### Capable

Developing our leadership, talent, systems and funding

### Collaborative

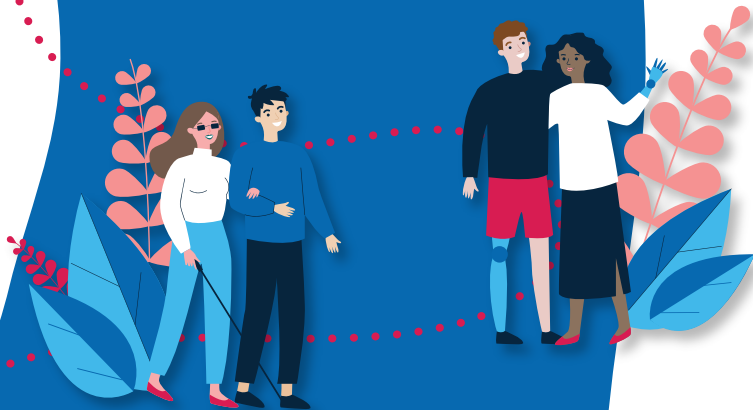
Working together to optimise research quality, output and impact

### Connected

Linking researchers, clinicians, consumers, partners and funders to build a high performing research-oriented organisation

## Better Careers

Our people experiencing enriched careers through connection with and involvement in research and research translation





# **Our Life-Changing Research**

**A St Vincent's-wide research community  
that drives excellence in care and champions  
our Mission and Values of Compassion,  
Excellence, Justice and Integrity**

# Better Care

Our community experiencing better care and value through research driven improvement and access to new therapies and medical devices



# Better Careers

Our people experiencing enriched careers through connection with and involvement in research and research translation



# Capable

Developing our leadership, talent, systems and funding sources

## ACTIVITIES

- / Undertake an organisational census of research capability including personnel, activities, systems, employment models and supports to inform ongoing strategy development
- / Develop a framework to support research activity in private and care services divisions
- / Develop and implement a suite of SVHA Research policies and procedures to align processes and support NCTGF requirements
- / Develop and implement a suite of research KPIs for reporting to the Executive and Board and for showcasing to potential partners and sponsors
- / Develop an SVHA Research strategy for clinical trials, including creating a single comprehensive clinical trial identity and service nationally, and implementing a clinical trials management system
- / Implement a national ethics/governance program to align and streamline ethics processes
- / Explore sustainable financial models to enable research continuity and growth

## MEASURES / OUTCOMES

- / A detailed census report of research capability across St Vincent's is reported to the Executive and Board
- / Research is enabled across the private and care services divisions
- / Our facilities are prepared for the introduction of NCTGF accreditation requirements in 2025
- / A national ethics and governance program enabled by shared / common IT systems
- / The SVHA Research Clinical Trials Program is ready for implementation



# Collaborative

Working together to optimise research quality, output and impact

## ACTIVITIES

- / Establish central research groups to facilitate and coordinate activity across key research themes e.g. palliative care, cancer services, drug and addiction services, homeless services
- / Develop and implement a national strategy for optimising commercialisation of research outcomes, including a commercialisation framework and standardised IP policy and procedure
- / Develop and implement a SVHA Research consumer engagement policy
- / Engage with our philanthropic community to explore potential models for research support based on an organisational approach

## MEASURES / OUTCOMES

- / Five established SVHA Research themes
- / A clear and well communicated IP and commercialisation framework is embedded across our organisation
- / SVHA Research has an established consumer and community engagement program

# Connected

Linking researchers, clinicians, consumers, partners and funders to build a high performing, research-oriented organisation

## ACTIVITIES

- / Establish a portal / website for SVHA Research with content, functions and linkages relevant to target audiences including researchers, clinicians, consumers, sponsors etc.
- / Conduct research engagement surveys for staff, participants and consumers more generally to inform ongoing engagement strategies
- / Develop and implement a communication and engagement strategy for our research to support the objectives of the Strategy, promote organisation-wide awareness and engagement, promote the profile of organisation's research achievements and advocate for health and medical research
- / Establish a combined annual Research Symposium to showcase research and encourage cross collaboration
- / Publish an Annual Research Report, including national KPIs and national recognition
- / Promote cross campus research forums, staff development and opportunities

## MEASURES / OUTCOMES

- / SVHA Research has an embedded communications plan and web portal
- / There is an established multidisciplinary Research Network with associated communications, webinars, networking, events etc
- / An annual Research Symposium is established

# Role of SVHA Research

SVHA Research is envisaged as the overarching identity of our research community, providing a centralised resource to facilitate and align a national approach to research across the organisation.

SVHA Research will be responsible for the implementation of the Research Strategy. In the first 2 years, SVHA Research will focus on building our research community – connecting researchers, clinicians and leaders throughout the divisions and facilities; sharing knowledge about the research being undertaken and the resources available; and facilitating opportunities for engagement and collaboration.

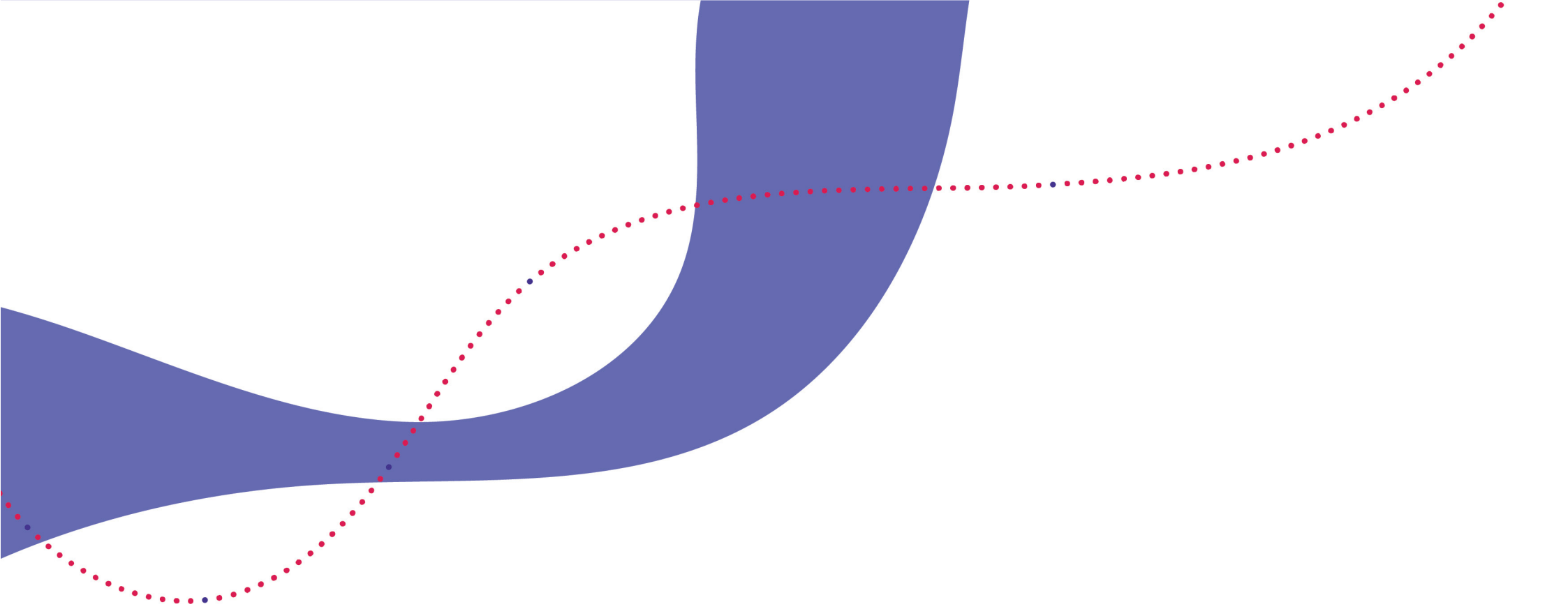
As a centralised resource, SVHA Research will:

- / Prioritise the establishment of research themes for early alignment
- / Facilitate research governance and reduce duplication across St Vincent's
- / Provide research support to private and care services divisions, linking them into the research community
- / Be responsible for providing overarching support for facilities to meet the NCTGF requirements in accreditation
- / Provide a single front door for collaborators / companies / researchers who want to engage with St Vincent's to undertake research
- / Support St Vincent's to advocate and lead Catholic health research in Australia
- / Report research activities to the Executive and Board

# Our Success: Two years from now

## WHAT WILL SUCCESS LOOK LIKE?

- / A well established SVHA research community spanning all St Vincent's divisions and precincts
- / A well recognised identity for SVHA Research – what it delivers and how it enables, supports and facilitates research
- / The links between research, evidence and excellence of clinical care are tangible / demonstrable in the organisation
- / Broad visibility of SVHA Research both internally and beyond St Vincent's
- / A well established annual research forum with broad representation from all divisions and precincts



ST VINCENT'S  
HEALTH AUSTRALIA

go beyond